

**AN INVITATION TO THE FOURTH  
NORTHERN CALIFORNIA CHIEF APPRAISERS MEETING  
FRIDAY, FEBRUARY 21, 2014  
SAN FRANCISCO FEDERAL BUILDING  
90 7TH STREET  
SAN FRANCISCO, CA 94103  
8:00AM - 5:00PM**

RSVP TO STEW HELLER, MRICS, MDIV AT:  
STEWHELLER@AOL.COM OR 510-816-2974

**FEATURED SPEAKERS**

ROBERT L. PARSON, MAI  
APPRAISAL POLICY SPECIALIST,  
OFFICE OF THE COMPTROLLER OF THE CURRENCY

DAVID HENRY  
REGIONAL EXAMINER, U.S. TREASURY

RICHARD RAWSON  
APPRAISAL REVIEW SPECIALIST, FDIC

DAVID DOYLE  
SENIOR EXAMINER, FEDERAL RESERVE BANK OF SAN FRANCISCO

JAMES MARTIN  
BUREAU CHIEF, BUREAU OF REAL ESTATE APPRAISERS

JOHN L. HOSACK, ESQ.  
SHAREHOLDER, BUCHALTER NEMER

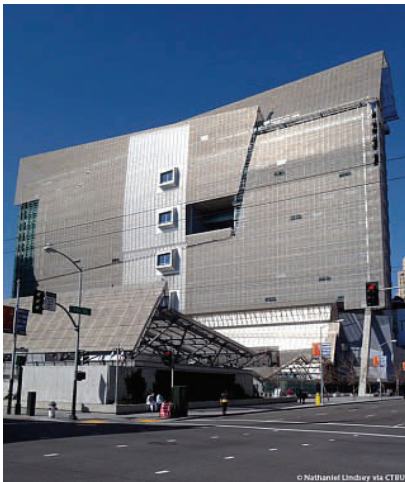
PATRICIA H. LYON, ESQ.  
FRENCH & LYON

JAY GRENFELL  
NATIONAL CLIENT MANAGER, PARTNER ENGINEERING AND SCIENCE, INC.

RONALD SIMMONS  
DIRECTOR OF VALUATION SERVICES & CHIEF APPRAISER,  
AXIS APPRAISAL MANAGEMENT SOLUTIONS

JEFF WICKHAM  
CO-FOUNDER & PRESIDENT, VALLIGENT

BRANDON L. SCOTT  
PRESIDENT, BLR COMMERCIAL REAL ESTATE, INC.



## DIRECTIONS TO THE SAN FRANCISCO FEDERAL BUILDING

**90 7TH STREET**

**SAN FRANCISCO, CA 94103**

**(CORNER OF 7TH STREET & MISSION STREET)**

### **DRIVING**

#### **FROM BAY BRIDGE AND EAST BAY**

EXIT ON 5TH STREET. BEAR LEFT ONTO HARRISON STREET. TURN RIGHT ONTO 7TH STREET. DRIVE 3 BLOCKS AND SF FEDERAL BUILDING WILL BE ON THE LEFT.

#### **FROM GOLDEN GATE BRIDGE**

HWY 101 SOUTH OVER GOLDEN GATE BRIDGE. TURN LEFT ON GROVE STREET. BEAR RIGHT ONTO HYDE STREET. CONTINUE ONTO 8TH STREET. TURN LEFT ONTO MISSION STREET. TURN LEFT ONTO 7TH STREET. GO HALF A BLOCK AND SF FEDERAL BUILDING WILL BE ON THE LEFT.

#### **FROM SFO AIRPORT AND SOUTH BAY**

HWY 101 NORTH INTO SAN FRANCISCO. FOLLOW SIGNS FOR BAY BRIDGE. EXIT AT 7TH STREET. MAKE A LEFT TURN ONTO 7TH STREET. GO 4 BLOCKS AND SF FEDERAL BUILDING WILL BE ON THE LEFT.

### **PARKING**

1127 MISSION STREET

DAILY RATE \$12.00

415-556-8210

650-393-0811

SOMA GRAND GARAGE

1160 MISSION STREET

(X. 7TH & JULIA STREETS)

DAILY RATE \$12.00

415-431-8800

US PARKING

1064 MISSION STREET

(X. 6TH & 7TH STREETS)

DAILY RATE \$10/12 HOURS

415-974-6155

PLEASE CHECK [WWW.PARKME.COM](http://WWW.PARKME.COM) FOR THE BEST RATES ON THE DAY OF THE EVENT.

### **BART**

30 MINUTES FROM SFO

60 MINUTES FROM OAKLAND

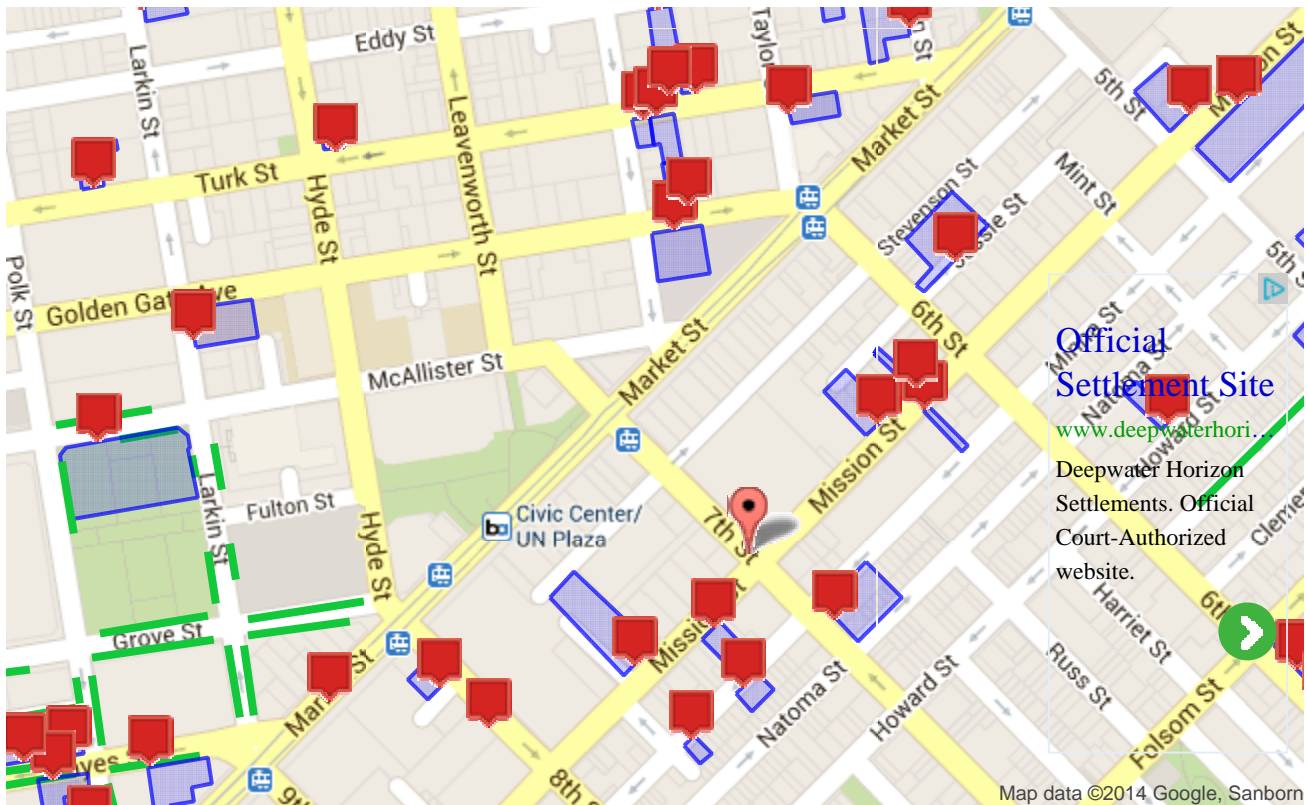
UPON REACHING CIVIC CENTER STATION, GO TO STREET LEVEL BY USING THE MARKET STREET & 7TH STREET EXIT.

WALK UP A BLOCK TO 7TH STREET AND TAKE A RIGHT.

FEDERAL BUILDING WILL BE ON YOUR RIGHT.



Add to your site



	Address	Distance	Hours	Price
1	1127 Mission Street	2 mins	Mon-Fri 7am-7pm	\$12.00 / daytime
2	Americania Hotel - 121 7th Street	2 mins	Mon-Sun 24 hours	\$15.00 / daytime
3	625 Minna Street	2 mins	Mon-Sun 24 hours	\$189.00 / month
4	SOMA Grand Garage - 1160 Mission Street	3 mins	Mon-Sun	\$10.00 / max
5	1040 Mission Street	3 mins	Mon-Sun 24 hours	\$10.00 / daytime
6	645 Minna Street	3 mins	Mon-Sun 24 hours	\$183.50 / month
7	1023 Mission Street	4 mins	Mon-Fri 7am-7pm	\$5.00 / 1 hour

8	1014 Mission Street	4 mins	Mon-Sun 24 hours	\$180.00 / month (Mon-Fri)
9	Holiday Inn Civic Center Hotel	5 mins	Mon-Sun 24 hours	\$20.00 / daytime
10	99 Golden Gate Avenue	5 mins	Mon-Sun 24 hours	\$20.00 / 24 hours
11	1231 Market Street	5 mins	Mon-Sun 6am-12am	\$15.00 / flat rate
12	64 Golden Gate	5 mins	Mon-Fri 6:30am-8pm	\$20.00 / 24 hours
13	486 Jessie Street	6 mins	Mon-Sun	\$5.00 / 20 mins
14	970 Howard Street	7 mins	Mon-Sun 24 hours	\$10.00 / flat rate
15	67 Turk Street	7 mins	Mon-Fri 7am-7pm	\$20.00 / 24 hours
16	Wells Fargo Civic Center	7 mins	Mon-Sun	\$20.00 / 12 hours
17	199 Turk Street	7 mins	Mon-Sun 24 hours	\$10.00 / 12 hours
18	Turk Street Garage - 175 Turk Street	7 mins	Mon-Sun 8am-10pm	\$10.00 / daytime
19	150 Turk Street	7 mins	Mon-Sun	\$8.00 / daytime
20	168 Turk Street	7 mins	Mon-Sun 24 hours	\$175.00 / month
21	Hotel Metropolis - 25 Mason Street	8 mins	Mon-Sun 24 hours	\$35.00 / overnight
22	265 Eddy Street	8 mins	Mon-Sun 24 hours	\$8.00 / daytime
23	301 6th Street	8 mins	Mon-Fri 7am-7pm	\$15.00 / flat rate
24	200 Hyde Street	9 mins	Mon-Sun 24 hours	\$219.00 / month (reserved)
25	155 Eddy Street	9 mins	Mon-Sun 9:30am-8pm	\$10.00 / flat rate
26	UC Hastings College of the Law	9 mins	Mon-Sun	\$8.00 / flat rate
27	345 6th Street	9 mins	Mon-Sun 24 hours	\$12.00 / flat rate
28	210 Taylor Street	9 mins	Mon-Sun 6am-8pm	\$35.00 / 24 hours
29	333 Jones Street	9 mins	Mon-Sun	\$10.00 / daytime
30	Pickwick Garage - 890 Mission Street	9 mins	Mon-Sun 24 hours	\$50.00 / 24 hours
31	Fox Plaza Garage - 1390 Market Street	9 mins	Mon-Fri 6am-8pm	\$20.00 / 24 hours
32	5th Street / Howard Street	9 mins	Mon-Sun	\$15.00 / 10 hours
33	Civic Center - 355 McAllister Street	10 mins	Mon-Sun	\$24.00 / max
34	Market Square/Twitter Building	10 mins	Mon-Fri 6am-7pm	\$20.00 / daytime
35	Fifth & Mission Parking Garage	10 mins	Mon-Sun 24 hours	\$32.00 / 24 hours
36	7th & Harrison Lot - 415 7th Street	10 mins	Mon-Fri 7am-7pm	\$5.00 / flat rate
37	Parc 55 Wyndham Hotel	10 mins	Mon-Sun 24 hours	\$49.00 / max
38	101 Polk Street	11 mins	Mon-Sun 24 hours	\$20.00 / 24 hours
39	InterContinental Hotel	11 mins	Mon-Sun 24 hours	\$52.00 / 24 hours
40	Polk Street Garage - 1 Polk Street	11 mins	Mon-Fri 7am-7pm	\$3.00 / 30 mins
41	Hilton Union Square Hotel	11 mins	Mon-Sun 24 hours	\$53.58 / 24 hours
42	69 Polk St	11 mins	Mon-Sun 24 hours	\$5.00 / flat rate
43	Hotel Nikko - 222 Mason Street	11 mins	Mon-Sun 24 hours	\$45.00 / 24 hours
44	530 Turk Street	11 mins	Mon-Sun 6:30am-5:30pm	\$15.00 / flat rate
45	150 Hayes Street	11 mins	Mon-Fri 7am-7pm	\$12.00 / flat rate
46	Hotel Abri - 127 Ellis Street	11 mins	Mon-Sun 24 hours	\$40.00 / 24 hours
47	550 O'Farrell Street	12 mins	Mon-Sun	\$25.00 / 24 hours
48	400 Taylor Street	12 mins	Mon-Sun 24 hours	\$45.00 / 24 hours

49	<b>Cova Hotel - 655 Ellis Street</b>	12 mins	Mon-Sun 24 hours	\$27.00 / 24 hours
50	<b>80 Ellis Street</b>	12 mins	Mon-Sun 6am-12am	\$35.00 / 24 hours
51	<b>Private Driveway For Rent - Driveway On Van Ness Ave, 94109</b>	15 mins	Mon-Sun 24 hours	\$42.50 / day
52	<b>Private Garage For Rent - Parking For World Series Game 1!</b>	16 mins		\$27.00 / day
53	<b>Public Garage For Rent - Garage On King Street, 94107</b>	20 mins	Mon-Sun 24 hours	\$14.00 / day
54	<b>Private Driveway For Rent - Convenient Soma Location</b>	21 mins		\$42.50 / day
55	<b>Private Garage For Rent - Garage On Jones Street, 94109</b>	27 mins	Mon-Sun 24 hours	\$53.00 / day
56	<b>Private Garage For Rent - Great Space</b>	30 mins	Mon-Sun 24 hours	\$20.00 / day
57	<b>Private Garage For Rent - Commuter Parking</b>	30 mins		\$7.00 / day
58	<b>Private Garage For Rent - Perfect Spot</b>	30 mins	Mon-Sun 24 hours	\$10.50 / day
59	<b>Permission To Block Driveway For Rent - Dedicated Spot At 18Th &amp; Alabama - San Francisco</b>	30 mins		\$12.00 / day
60	<b>Allocated Parking Space In Car Park For Rent - Parking Space On Mission Street, 94110</b>	32 mins	Mon-Sun 24 hours	\$50.00 / day
61	<b>Private Parking Lot For Rent - Secure Reserved Parking Space In Condo</b>	32 mins		\$17.50 / day
62	<b>Allocated Car Park Space For Rent - Parking Space On Jackson Street, 94115</b>	35 mins	Mon-Sun 24 hours	\$27.50 / day
63	<b>Private Garage For Rent - Garage Spot For Rent At Divisadero &amp; Eddy, Sf</b>	37 mins	Mon-Sun 24 hours	\$42.50 / day
64	<b>Permission To Block Driveway For Rent - Parking Space On Minnesota St., 94107</b>	40 mins	Mon-Sun 24 hours	\$19.00 / day
65	<b>Permission To Block Driveway For Rent - Parking Space On Filbert St # , 94123</b>	40 mins	Mon-Sun 24 hours	\$19.00 / day
66	<b>Private Garage For Rent - Garage On Utah Street, 94110</b>	44 mins	Mon-Sun 24 hours	\$11.50 / day

© 2014 Parkopedia